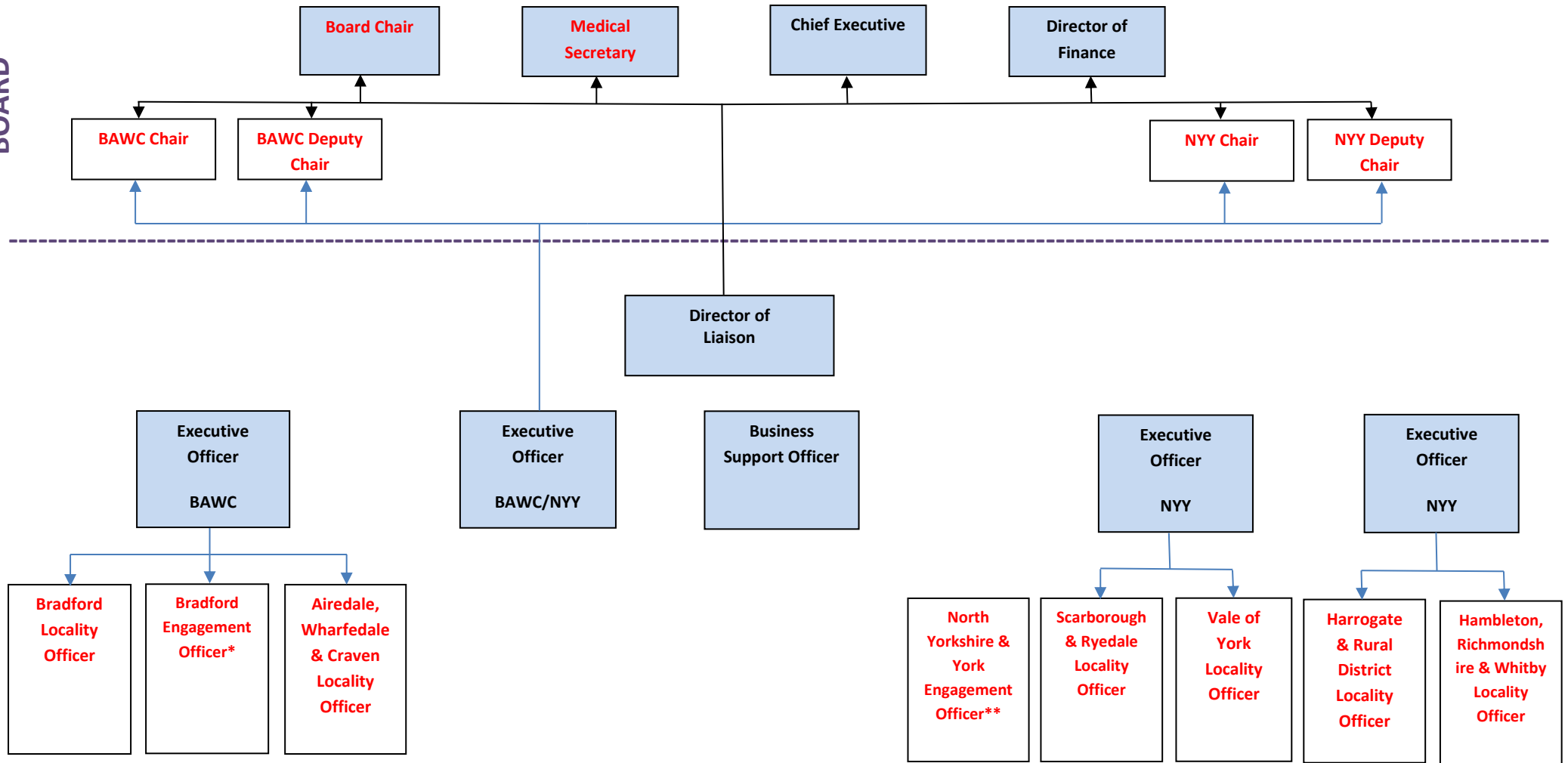


YORLMC LTD STRUCTURE

BOARD



* this role will act as a link between practices in the 2 historic localities of City and District. The post holder will also work alongside the Bradford locality chair.

** this role will provide support to the NY Deputy Chair and Locality Chair, HaRD, during a period of transition. The post holder will also be a member of YORLMC's Executive Committee.

Corporate Affairs Team

GP Roles identified in red

Dedicated CAT support to Officers/Leads

